



MONTHLY MEMBERSHIP PROGRESS REPORT

District 4 C1

Results as of: 09/30/2017

GMT: HOWARD HUDSON

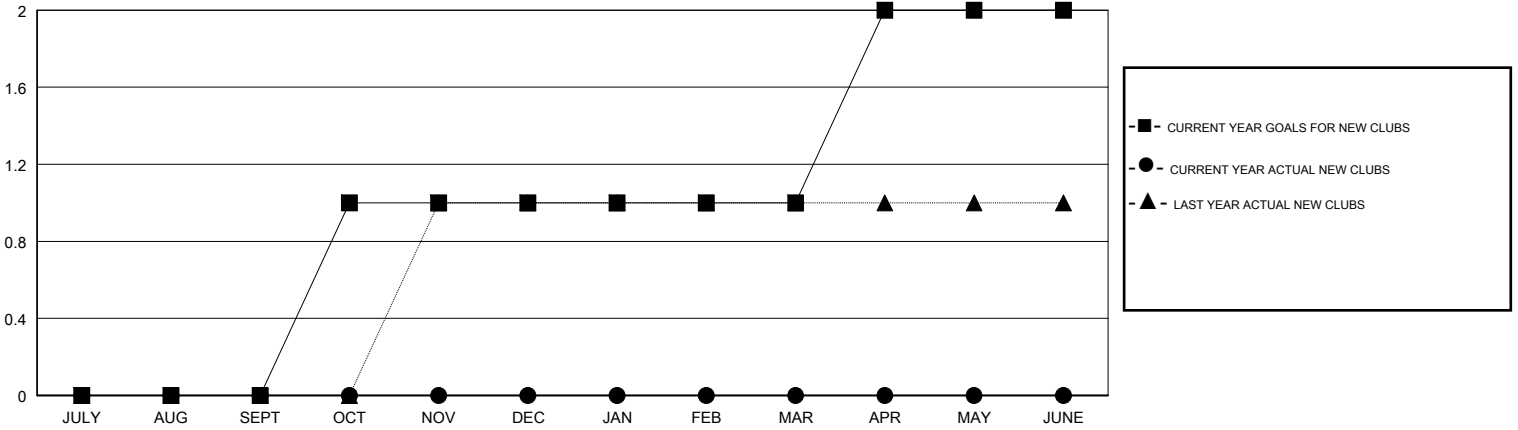
LOCATION CALIFORNIA

GMT CA

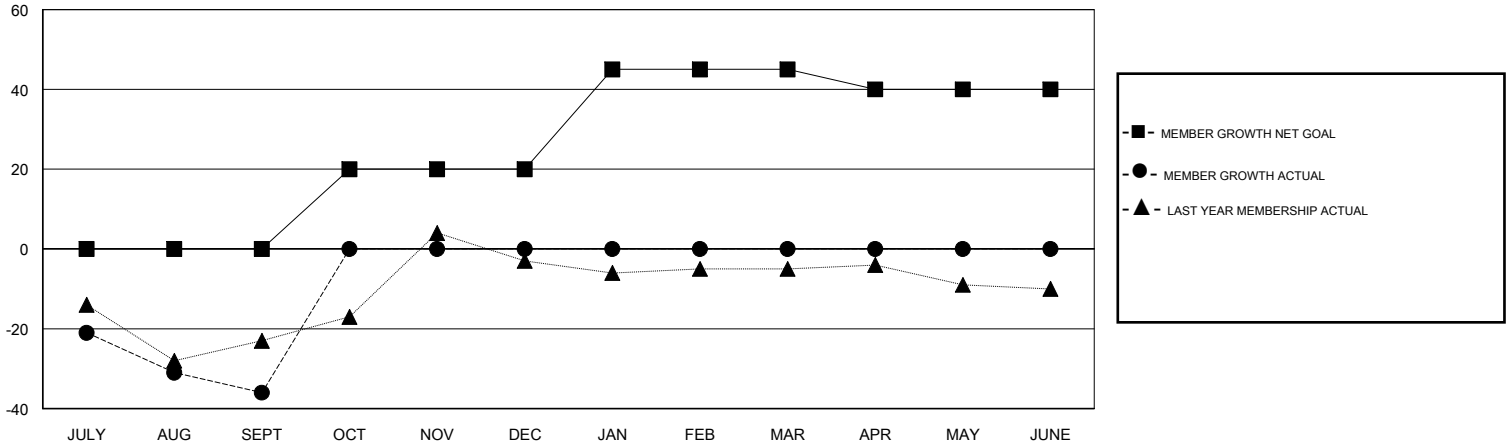
Clubs			
RESULTS FOR 2017-2018			
QUARTER	NEW CLUB GOAL	NEW CLUBS	DROPPED CLUBS
JULY/AUG/SEPT	0	0	0
OCT/NOV/DEC	1	0	0
JAN/FEB/MAR	0	0	0
APR/MAY/JUNE	1	0	0

Members			
RESULTS FOR 2017-2018			
QUARTER	MEMBER GROWTH NET GOAL	MEMBER GROWTH ACTUAL	DROPPED MEMBERS ACTUAL (including transfers)
JULY/AUG/SEPT	0	20	56
OCT/NOV/DEC	20	0	0
JAN/FEB/MAR	25	0	0
APR/MAY/JUNE	-5	0	0

GOALS AND ACTUAL NEW CLUBS CUMULATIVE



GOALS AND ACTUAL MEMBERS CUMULATIVE



DROPPED CLUBS: 0

12 CLUBS OF 46 ADDED 1 OR MORE NEW MEMBERS

GENDER DISTRIBUTION	
MALE	707 (67.79%)
FEMALE	336 (32.21%)
Women Percentage Fiscal Year Goal: 35%	

DROPPED MEMBERS	
DECEASED	6
CLUB CANCELLED	0
OTHER	50
TOTAL	56

[CLICK HERE FOR CUMULATIVE MEMBERSHIP DATA](#)

TOTAL FAMILY UNIT MEMBERS	229
FAMILY MEMBERS PAYING HALF DUES	116